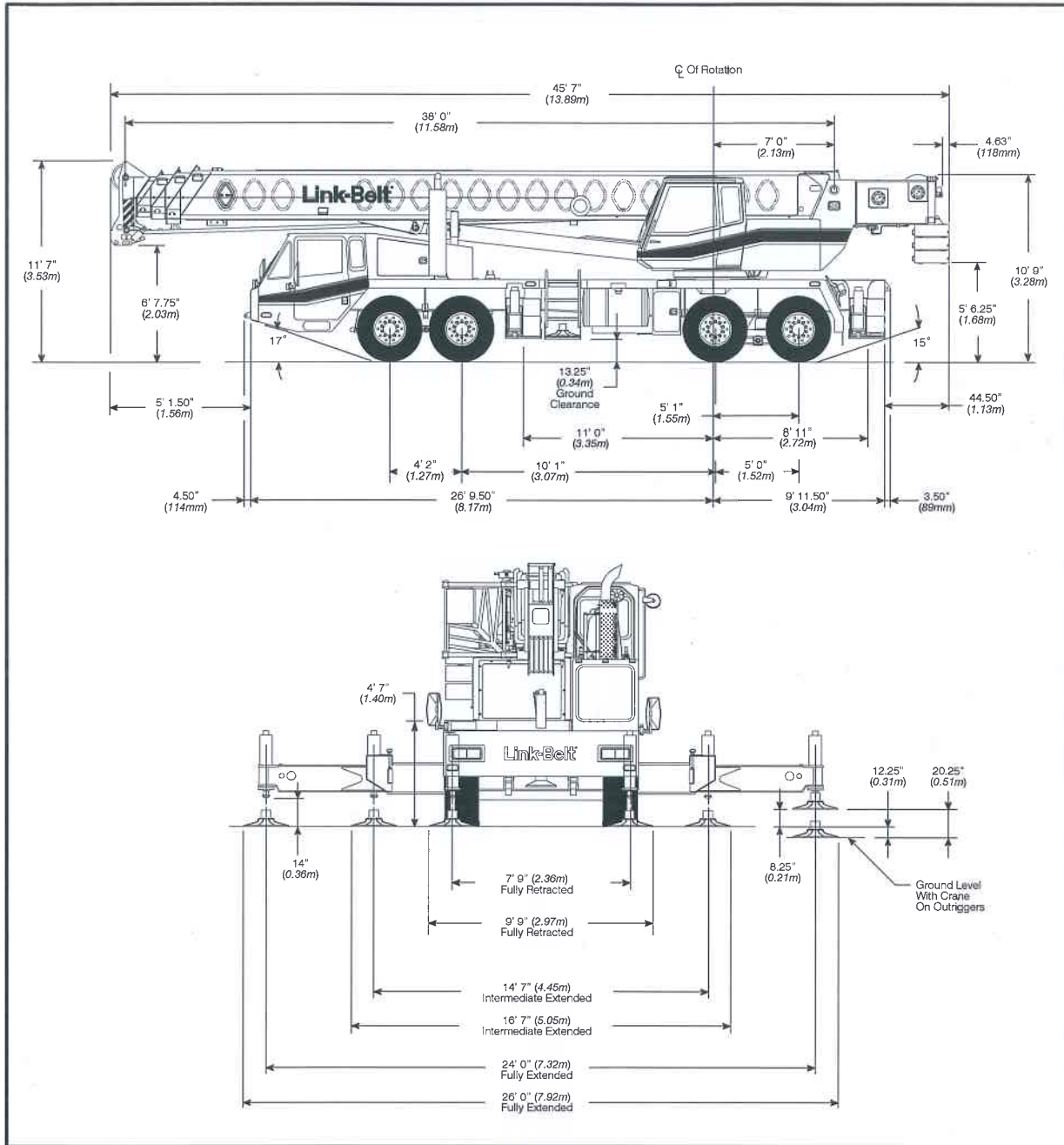


## General Dimensions



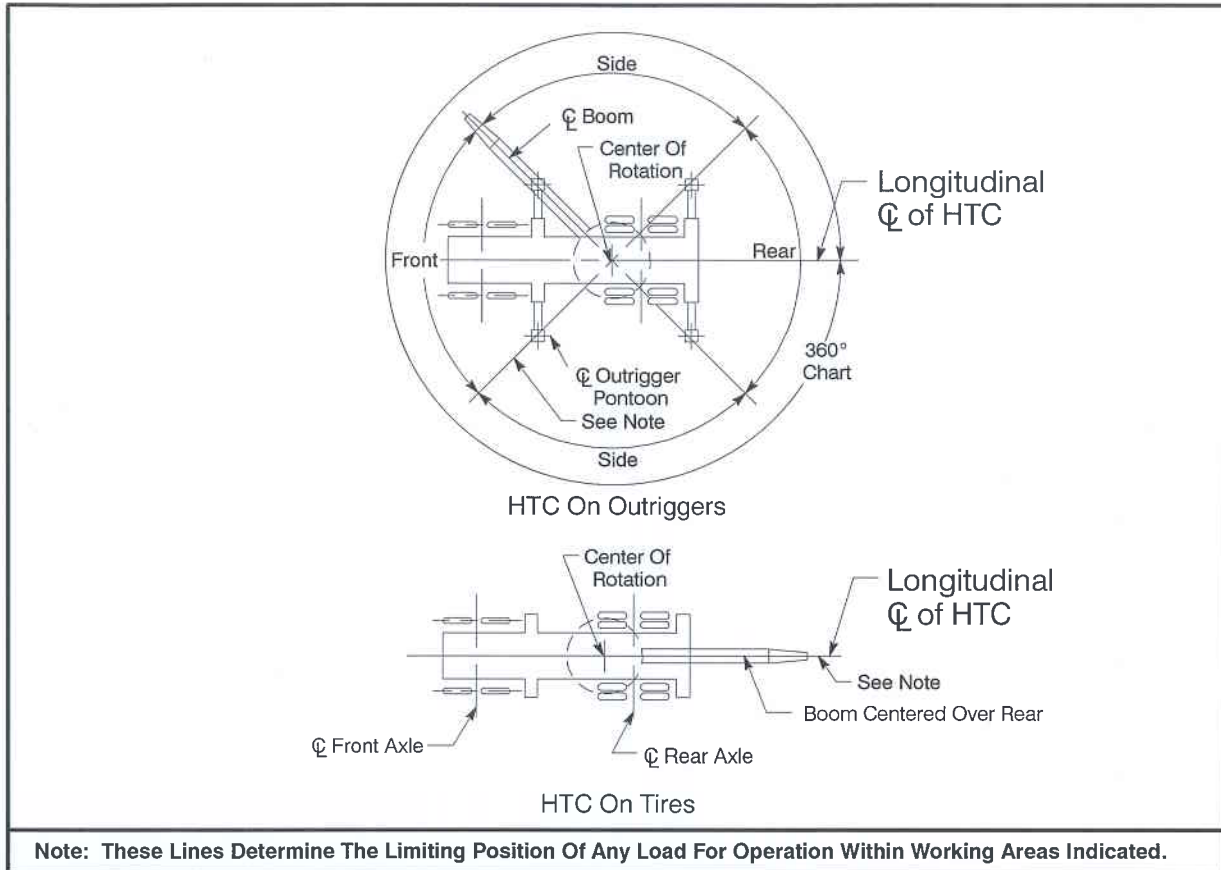
## Tire Inflation

Tire Size	Operation	Tire Pressure (psi)
12 R 22.5	1 mph	120
	Stationary	120

## Pontoon Loadings

Maximum Pontoon Load	Maximum Pontoon Ground Bearing Pressure
97,400 lb	215 psi

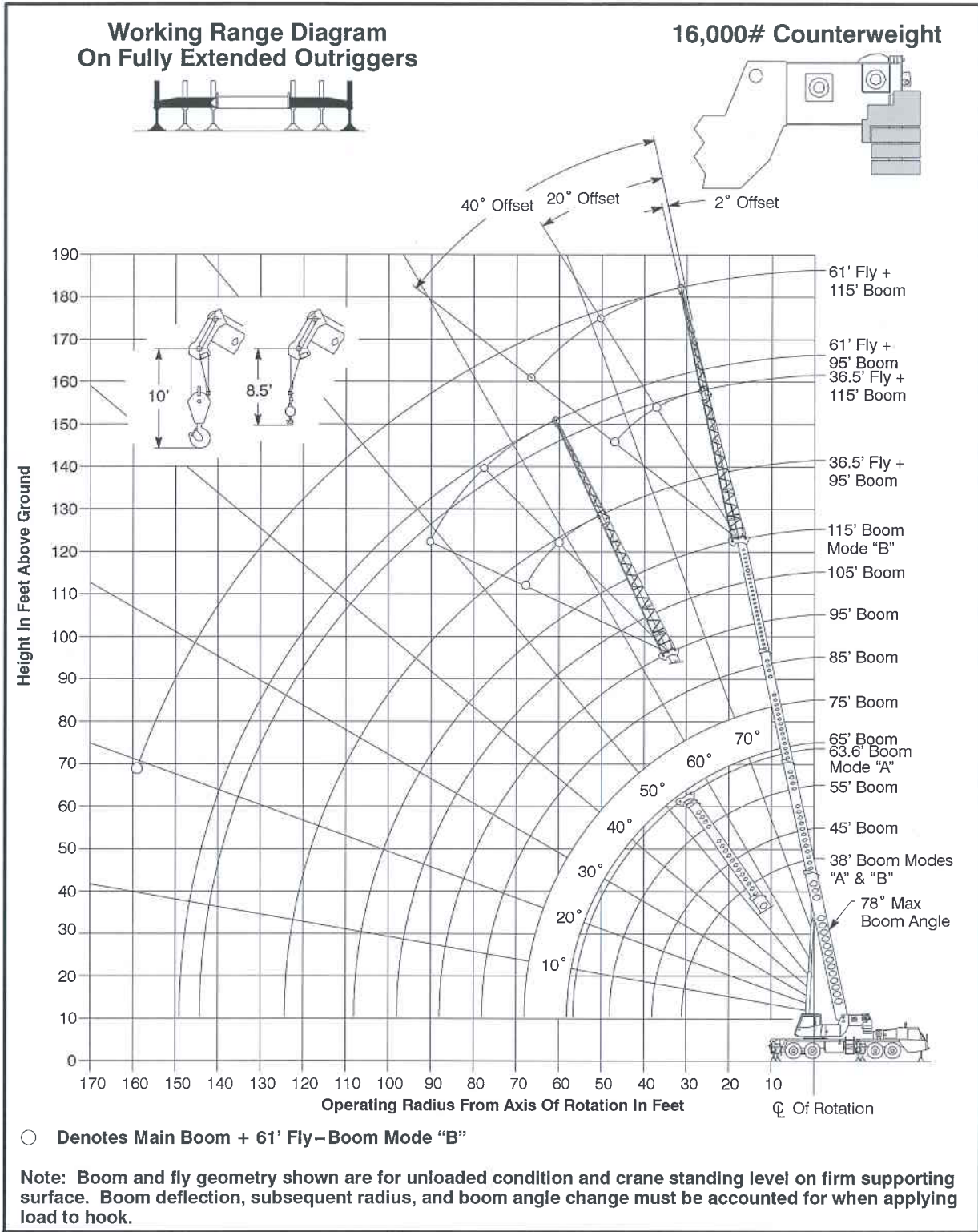
## Working Areas



## Capacity Deductions For Auxiliary Load Handling Equipment

Load Handling Equipment	Weight (lb)
Auxiliary Head Attached	100
40 Ton Quick Reeve 4 Sheave Hook Block (See Hook Block For Actual Weight)	720
60 Ton Quick Reeve 4 Sheave Hook Block (See Hook Block For Actual Weight)	1,100
75 Ton Quick Reeve 5 Sheave Hook Block (See Hook Block For Actual Weight)	1,400
8.5 Ton Hook Ball (See Hook Ball For Actual Weight)	360
<b>Lifting From Main Boom With:</b>	
36.5' Or 61' Fly Stowed On Base (See Operation Note 4)	0
36.5' Offset Fly Erected But Not Used	6,100
61' Offset Fly Erected But Not Used	7,600
<b>Lifting From 36.5' Offset Fly With:</b>	
24.5' Fly Tip Erected But Not Used	<b>Prohibited</b>
24.5' Fly Tip Stowed On 36.5' Offset Fly	<b>Prohibited</b>
<b>Note: Capacity deductions are for Link-Belt supplied equipment only.</b>	

# Working Range Diagram



## WARNING

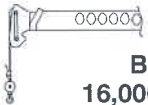
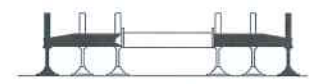
Do Not Lower The Boom Below The Minimum Boom Angle For No Load As Shown In The Lift Charts For The Boom Lengths Given. Loss Of Stability Will Occur Causing A Tipping Condition.

Load Radius (ft)		38'		45'			Load Radius (ft)
		Loaded Boom Angle (Deg.)	360°	Over Rear	Loaded Boom Angle (Deg.)	360°	
8	70.5	150,000*	150,000*				8
9	69.0	140,000*	140,000*				9
10	67.0	132,000*	132,000*	71.0	87,400	87,400	10
12	64.0	116,900	116,900	68.5	87,400	87,400	12
15	58.5	100,200	100,200	64.0	87,400	87,400	15
20	48.5	75,900	75,900	56.5	75,500	75,500	20
25	36.5	58,700	58,700	48.0	58,300	58,300	25
30	17.5	45,400	45,400	38.0	45,100	45,100	30
35				24.5	34,500	34,500	35
Min.Bm. Ang./Cap.	0 (31.0)	25,200	25,200	0 (38.0)	20,200	20,200	Min.Bm. Ang./Cap.

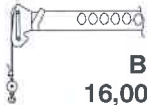
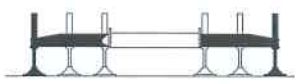
Note: Refer To Page 8 For "Capacity Deductions" Caused By Auxiliary Load Handling Equipment.

( ) Reference Radius For Minimum Boom Angle Capacities (Shown In Parenthesis) Are In Feet.

\* Special conditions or wire rope required.

 <b>Rated Lifting Capacities In Pounds</b> <b>On Fully Extended Outriggers</b> <b>See Set Up Note 2.</b> 							
<b>Boom Mode "A"</b> <b>16,000# Counterweight</b>							
Load Radius (ft)	55'			63.6'			Load Radius (ft)
	Loaded Boom Angle (Deg.)	360°	Over Rear	Loaded Boom Angle (Deg.)	360°	Over Rear	
10	75.0	85,600	85,600				10
12	73.0	85,600	85,600	75.5	56,300	56,300	12
15	69.5	85,600	85,600	73.0	56,300	56,300	15
20	64.0	75,000	75,000	68.0	53,000	53,000	20
25	57.5	57,900	57,900	63.0	44,900	44,900	25
30	51.0	44,400	44,400	57.5	38,700	38,700	30
35	43.0	34,100	34,100	51.5	33,700	33,700	35
40	34.5	27,000	27,000	45.5	26,700	26,700	40
45	22.0	21,800	21,800	38.0	21,600	21,600	45
50				29.0	17,700	17,700	50
55				16.0	14,600	14,600	55
Min.Bm. Ang./Cap.	0 (48.0)	14,100	14,100	0 (56.6)	10,400	10,400	Min.Bm. Ang./Cap.

**Note: Refer To Page 8 For "Capacity Deductions" Caused By Auxiliary Load Handling Equipment.**  
 ( ) Reference Radius For Minimum Boom Angle Capacities (Shown In Parenthesis) Are In Feet.

 <b>Rated Lifting Capacities In Pounds</b> <b>On Fully Extended Outriggers</b> <b>See Set Up Note 2.</b>										
<b>Boom Mode "B"</b> <b>16,000# Counterweight</b>										
Load Radius (ft)	38'			45'			55'			Load Radius (ft)
	Loaded Boom Angle (Deg.)	360°	Over Rear	Loaded Boom Angle (Deg.)	360°	Over Rear	Loaded Boom Angle (Deg.)	360°	Over Rear	
8	70.5	150,000*	150,000*							8
9	69.0	140,000*	140,000*							9
10	67.0	132,000*	132,000*	71.0	42,000	42,000	74.5	42,000	42,000	10
12	64.0	116,900	116,900	68.0	42,000	42,000	72.5	42,000	42,000	12
15	58.5	100,200	100,200	64.0	42,000	42,000	69.0	42,000	42,000	15
20	48.5	75,900	75,900	56.5	42,000	42,000	63.5	42,000	42,000	20
25	36.5	58,700	58,700	48.0	42,000	42,000	57.5	42,000	42,000	25
30	17.5	45,400	45,400	38.0	42,000	42,000	50.5	42,000	42,000	30
35				24.5	35,600	35,600	43.0	36,300	36,300	35
40							34.0	29,100	29,100	40
45							22.0	23,800	23,800	45
Min.Bm. Ang./Cap.	0 (31.0)	25,200	25,200	0 (38.0)	19,200	19,200	0 (48.0)	13,700	13,700	Min.Bm. Ang./Cap.

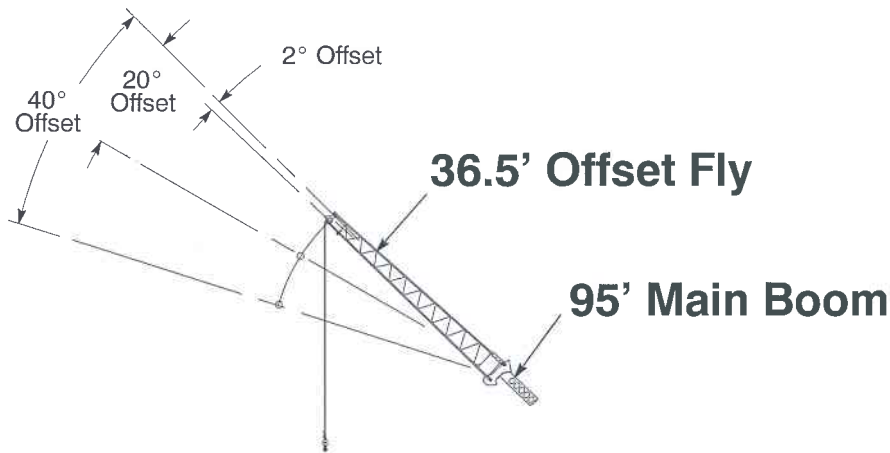
Load Radius (ft)	65'			75'			85'			Load Radius (ft)
	Loaded Boom Angle (Deg.)	360°	Over Rear	Loaded Boom Angle (Deg.)	360°	Over Rear	Loaded Boom Angle (Deg.)	360°	Over Rear	
12	75.5	42,000	42,000							12
15	73.0	42,000	42,000	75.5	42,000	42,000	77.5	42,000	42,000	15
20	68.0	42,000	42,000	71.5	42,000	42,000	74.5	42,000	42,000	20
25	63.5	42,000	42,000	68.0	42,000	42,000	71.0	41,800	41,800	25
30	58.0	42,000	42,000	63.5	42,000	42,000	67.0	36,900	36,900	30
35	52.5	36,600	36,600	59.0	36,800	36,800	63.5	32,900	32,900	35
40	46.5	29,400	29,400	54.0	29,600	29,600	59.5	29,700	29,700	40
45	39.5	24,300	24,300	49.0	24,500	24,500	55.0	24,600	24,600	45
50	31.5	20,300	20,300	43.0	20,600	20,600	50.5	20,700	20,700	50
55	20.0	17,200	17,200	37.0	17,500	17,500	46.0	17,600	17,600	55
60				29.5	15,000	15,000	40.5	15,100	15,100	60
65				19.0	12,900	12,900	34.5	13,100	13,100	65
70							27.5	11,400	11,400	70
75							18.0	9,900	9,900	75
Min.Bm. Ang./Cap.	0 (58.0)	10,100	10,100	0 (68.0)	7,600	7,600	0 (78.0)	5,700	5,700	Min.Bm. Ang./Cap.

Note: Refer To Page 8 For "Capacity Deductions" Caused By Auxiliary Load Handling Equipment.

( ) Reference Radius For Minimum Boom Angle Capacities (Shown In Parenthesis) Are In Feet.

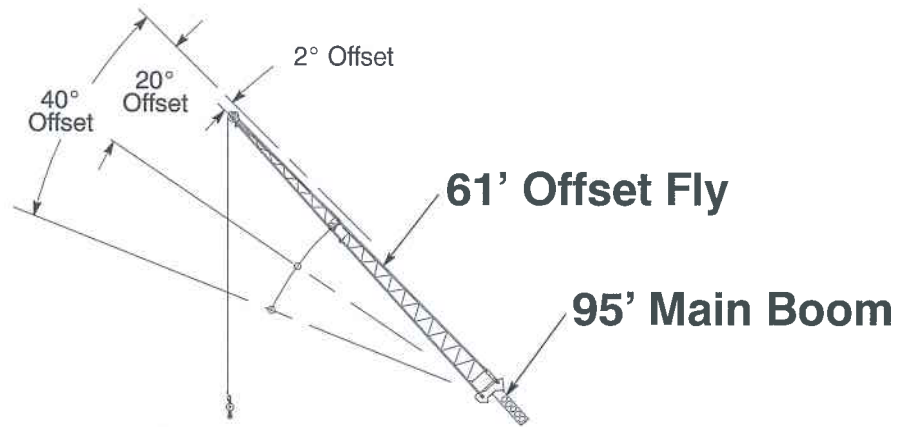
<b>Rated Lifting Capacities In Pounds</b> <b>On Fully Extended Outriggers</b> <b>See Set Up Note 2.</b>										
<b>Boom Mode "B"</b> <b>16,000# Counterweight</b>										
Load Radius (ft)	95'			105'			115'			Load Radius (ft)
	Loaded Boom Angle (Deg.)	360°	Over Rear	Loaded Boom Angle (Deg.)	360°	Over Rear	Loaded Boom Angle (Deg.)	360°	Over Rear	
20	76.5	38,600	38,600							20
25	73.5	33,800	33,800	75.5	30,300	30,300	77.0	24,500	24,500	25
30	70.0	29,800	29,800	72.5	27,000	27,000	74.5	24,500	24,500	30
35	67.0	26,600	26,600	69.5	24,100	24,100	72.0	22,200	22,200	35
40	63.5	23,900	23,900	66.5	21,700	21,700	69.5	20,000	20,000	40
45	60.0	21,700	21,700	63.5	19,600	19,600	66.5	18,100	18,100	45
50	56.0	19,800	19,800	60.5	17,900	17,900	63.5	16,300	16,300	50
55	52.5	17,700	17,700	57.0	16,200	16,200	61.0	14,900	14,900	55
60	48.0	15,200	15,200	53.5	14,900	14,900	58.0	13,600	13,600	60
65	43.5	13,200	13,200	50.0	13,300	13,300	54.5	12,500	12,500	65
70	38.5	11,600	11,600	46.0	11,600	11,600	51.5	11,600	11,600	70
75	33.0	10,100	10,100	41.5	10,200	10,200	48.0	10,300	10,300	75
80	26.5	8,800	8,800	37.0	8,900	8,900	44.0	9,000	9,000	80
85	17.0	7,700	7,700	31.5	7,800	7,900	40.0	7,800	7,900	85
90				25.5	6,800	6,900	35.5	6,900	7,000	90
95				16.5	5,900	6,000	30.5	6,000	6,100	95
100							24.5	5,200	5,400	100
105							16.0	4,600	4,700	105
Min.Bm. Ang./Cap.	0 (88.0)	4,300	4,300	0 (98.0)	3,100	3,100	0 (108.0)	2,200	2,200	Min.Bm. Ang./Cap.

**Note: Refer To Page 8 For "Capacity Deductions" Caused By Auxiliary Load Handling Equipment.**  
 ( ) Reference Radius For Minimum Boom Angle Capacities (Shown In Parenthesis) Are In Feet.

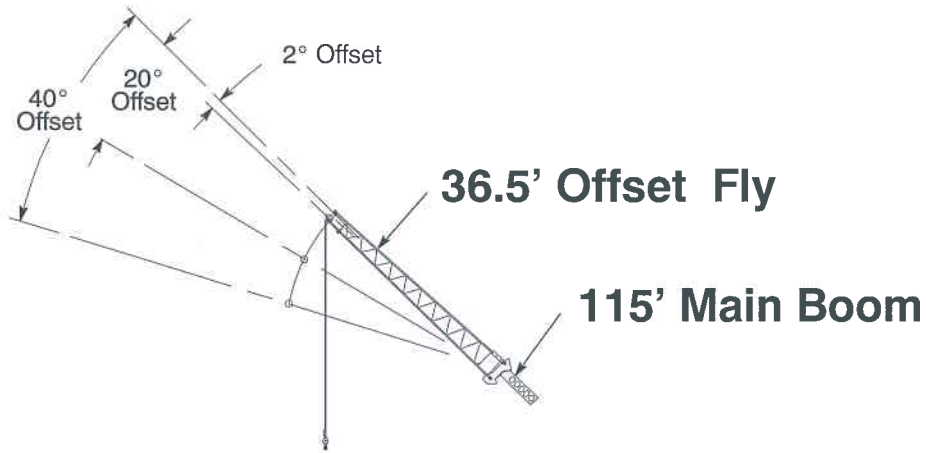


Boom Mode "B" 16,000# Counterweight		Rated Lifting Capacities In Pounds On Fully Extended Outriggers See Set Up Note 2.						
Load Radius (ft)	2° Offset		20° Offset		40° Offset		Load Radius (ft)	
	Loaded Boom Angle (Deg.)	360°	Loaded Boom Angle (Deg.)	360°	Loaded Boom Angle (Deg.)	360°		
30	76.5	16,900					30	
35	74.0	14,400					35	
40	72.0	13,700	76.5	10,200			40	
45	69.5	13,100	74.5	9,600			45	
50	67.5	12,400	72.0	9,100	76.5	6,800	50	
55	65.0	11,800	69.5	8,700	74.0	6,800	55	
60	62.5	11,200	67.0	8,300	71.5	6,600	60	
65	60.0	10,500	64.5	7,900	68.5	6,400	65	
70	57.5	9,800	62.0	7,600	66.0	6,300	70	
75	55.0	9,300	59.5	7,300	63.0	6,100	75	
80	52.0	8,700	56.5	7,000	60.0	6,000	80	
85	49.0	8,300	53.5	6,700	57.0	5,900	85	
90	46.0	7,800	50.5	6,500	53.5	5,800	90	
95	42.5	7,200	47.0	6,300	50.0	5,700	95	
100	39.0	6,500	43.5	6,100	46.0	5,700	100	
105	35.0	5,800	39.5	6,000	41.5	5,700	105	
110	30.5	5,100	35.0	5,400			110	
115	25.0	4,600	29.5	4,800			115	
120	18.5	4,100	22.0	4,200			120	
Min.Bm. Ang./Cap.	0	1,600	0	1,700	0	1,900	Min.Bm. Ang./Cap.	

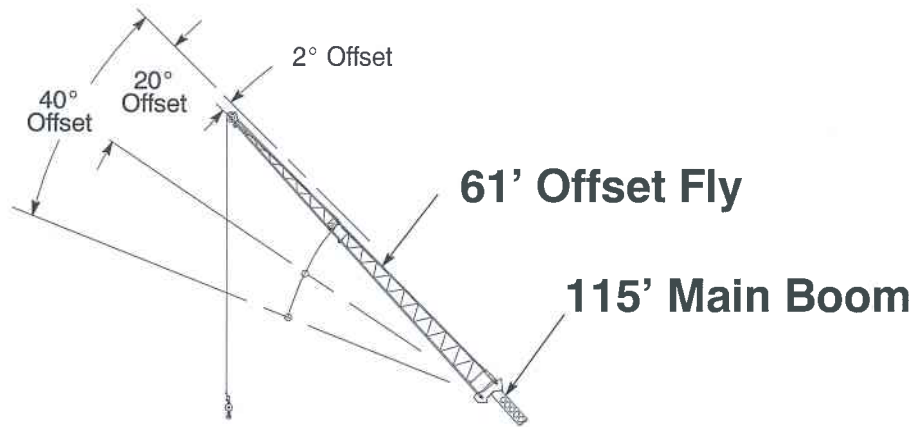




Boom Mode "B" 16,000# Counterweight		Rated Lifting Capacities In Pounds On Fully Extended Outriggers See Set Up Note 2.						
Load Radius Feet	2° Offset		20° Offset		40° Offset		Load Radius Feet	
	Loaded Boom Angle (Deg.)	360°	Loaded Boom Angle (Deg.)	360°	Loaded Boom Angle (Deg.)	360°		
35	77.5	9,500					35	
40	75.5	9,100					40	
45	74.0	8,500					45	
50	72.0	7,900					50	
55	70.0	7,400	77.0	5,200			55	
60	68.0	6,900	75.0	4,900			60	
65	66.0	6,400	73.0	4,600			65	
70	64.0	6,000	71.0	4,400	77.5	3,400	70	
75	62.0	5,600	69.0	4,200	75.0	3,300	75	
80	60.0	5,300	66.5	4,000	73.0	3,200	80	
85	57.5	5,000	64.5	3,900	70.5	3,100	85	
90	55.5	4,700	62.5	3,700	68.0	3,100	90	
95	53.0	4,500	60.0	3,600	65.5	3,000	95	
100	50.5	4,200	57.5	3,400	63.0	2,900	100	
105	48.0	4,000	55.0	3,300	60.0	2,900	105	
110	45.5	3,800	52.0	3,200	57.5	2,800	110	
115	43.0	3,600	49.5	3,100	54.0	2,800	115	
120	40.0	3,500	46.5	3,000	50.5	2,800	120	
125	36.5	3,300	43.0	2,900	47.0	2,800	125	
130	33.0	3,200	39.5	2,900	42.5	2,800	130	
135	29.0	3,100	35.0	2,800			135	
140	24.5	3,000	30.0	2,800			140	
145	18.0	2,700	22.5	2,800			145	
Min.Bm. Ang./Cap.	0	700	0	800	0	1,000	Min.Bm. Ang./Cap.	



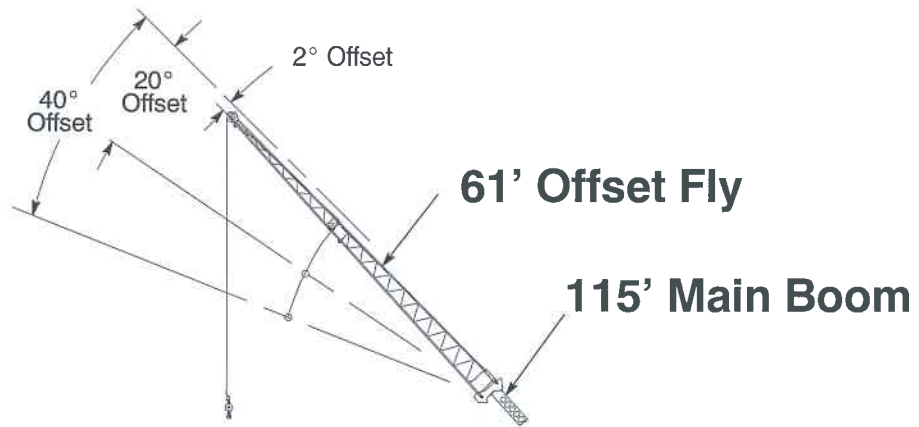
Load Radius Feet		Rated Lifting Capacities In Pounds On Fully Extended Outriggers See Set Up Note 2.					Load Radius Feet		
		2° Offset		20° Offset		40° Offset			
		Loaded Boom Angle (Deg.)	360°	Loaded Boom Angle (Deg.)	360°	Loaded Boom Angle (Deg.)	360°		
35	76.5	10,500						35	
40	75.0	10,500						40	
45	73.0	10,500	77.5	9,200				45	
50	71.5	10,500	75.5	8,900				50	
55	69.5	10,500	73.5	8,600	77.5	6,800		55	
60	68.0	10,500	71.5	8,200	75.0	6,600		60	
65	66.0	10,200	69.5	8,000	73.0	6,500		65	
70	63.5	9,500	67.5	7,700	71.0	6,300		70	
75	61.5	8,700	65.5	7,400	68.5	6,200		75	
80	59.0	8,000	63.5	7,200	66.5	6,100		80	
85	57.0	7,400	61.0	7,000	64.0	6,000		85	
90	54.5	6,900	58.5	6,800	61.5	5,900		90	
95	52.0	6,400	56.0	6,500	59.0	5,800		95	
100	49.0	5,900	53.5	6,100	56.5	5,700		100	
105	46.5	5,500	50.5	5,600	53.5	5,700		105	
110	43.5	4,900	48.0	5,200	50.5	5,400		110	
115	40.5	4,300	44.5	4,700	47.0	4,900		115	
120	37.0	3,800	41.0	4,100	43.0	4,300		120	
125	33.0	3,300	37.0	3,600				125	
130	29.0	2,900	32.5	3,100				130	
135	24.0	2,500	27.5	2,700				135	
140	17.5	2,200	20.5	2,300				140	
Min.Bm. Ang./Cap.	0	400	0	400	0	500	Min.Bm. Ang./Cap.		



Boom Mode "B" 16,000# Counterweight		Rated Lifting Capacities In Pounds On Fully Extended Outriggers See Set Up Note 2.						
Load Radius Feet	2° Offset		20° Offset		40° Offset		Load Radius Feet	
	Loaded Bm. Angle (Deg.)	360°	Loaded Bm. Angle (Deg.)	360°	Loaded Bm. Angle (Deg.)	360°		
40	77.5	7,100					40	
45	76.5	7,100					45	
50	75.0	7,100					50	
55	73.5	7,000					55	
60	72.0	6,700	78.0*	4,900			60	
65	70.0	6,400	76.0	4,700			65	
70	68.5	6,200	74.5	4,500			70	
75	67.0	5,900	73.0	4,300			75	
80	65.0	5,600	71.0	4,200	76.5	3,300	80	
85	63.5	5,300	69.0	4,000	74.5	3,200	85	
90	61.5	5,100	67.5	3,900	72.5	3,100	90	
95	59.5	4,800	65.5	3,700	70.5	3,000	95	
100	57.5	4,600	63.5	3,600	68.5	3,000	100	
105	55.5	4,400	61.5	3,500	66.5	2,900	105	
110	53.5	4,200	59.5	3,400	64.0	2,900	110	
115	51.5	4,000	57.0	3,300	62.0	2,800	115	
120	49.0	3,800	55.0	3,200	59.5	2,800	120	
125	46.5	3,400	52.5	3,100	57.0	2,800	125	
130	44.0	3,100	50.0	3,000	54.0	2,700	130	
135	41.5	2,900	47.5	2,900	51.0	2,700	135	
140	38.5	2,600	44.5	2,800	48.0	2,700	140	
145	35.5	2,300	41.5	2,500	44.0	2,700	145	
150	32.0	2,000	38.0	2,300			150	
155	28.0	1,700	33.5	2,000			155	
160	23.5	1,400	28.5	1,600			160	

**⚠ WARNING**

Do Not Lower 61' Offset Fly In Working Position Below 20° Unless Main Boom Length Is 108' Or Less, Since Loss Of Stability Will Occur Causing A Tipping Condition.



Boom Mode "B" 16,000# Counterweight		Rated Lifting Capacities In Pounds On Fully Extended Outriggers See Set Up Note 2.						
Load Radius Feet	2° Offset		20° Offset		40° Offset		Load Radius Feet	
	Loaded Bm. Angle (Deg.)	360°	Loaded Bm. Angle (Deg.)	360°	Loaded Bm. Angle (Deg.)	360°		
40	77.5	7,100					40	
45	76.5	7,100					45	
50	75.0	7,100					50	
55	73.5	7,000					55	
60	72.0	6,700	78.0*	4,900			60	
65	70.0	6,400	76.0	4,700			65	
70	68.5	6,200	74.5	4,500			70	
75	67.0	5,900	73.0	4,300			75	
80	65.0	5,600	71.0	4,200	76.5	3,300	80	
85	63.5	5,300	69.0	4,000	74.5	3,200	85	
90	61.5	5,100	67.5	3,900	72.5	3,100	90	
95	59.5	4,800	65.5	3,700	70.5	3,000	95	
100	57.5	4,600	63.5	3,600	68.5	3,000	100	
105	55.5	4,400	61.5	3,500	66.5	2,900	105	
110	53.5	4,200	59.5	3,400	64.0	2,900	110	
115	51.5	4,000	57.0	3,300	62.0	2,800	115	
120	49.0	3,800	55.0	3,200	59.5	2,800	120	
125	46.5	3,400	52.5	3,100	57.0	2,800	125	
130	44.0	3,100	50.0	3,000	54.0	2,700	130	
135	41.5	2,900	47.5	2,900	51.0	2,700	135	
140	38.5	2,600	44.5	2,800	48.0	2,700	140	
145	35.5	2,300	41.5	2,500	44.0	2,700	145	
150	32.0	2,000	38.0	2,300			150	
155	28.0	1,700	33.5	2,000			155	
160	23.5	1,400	28.5	1,600			160	

**! WARNING**

Do Not Lower 61' Offset Fly In Working Position Below 20° Unless Main Boom Length Is 108' Or Less, Since Loss Of Stability Will Occur Causing A Tipping Condition.