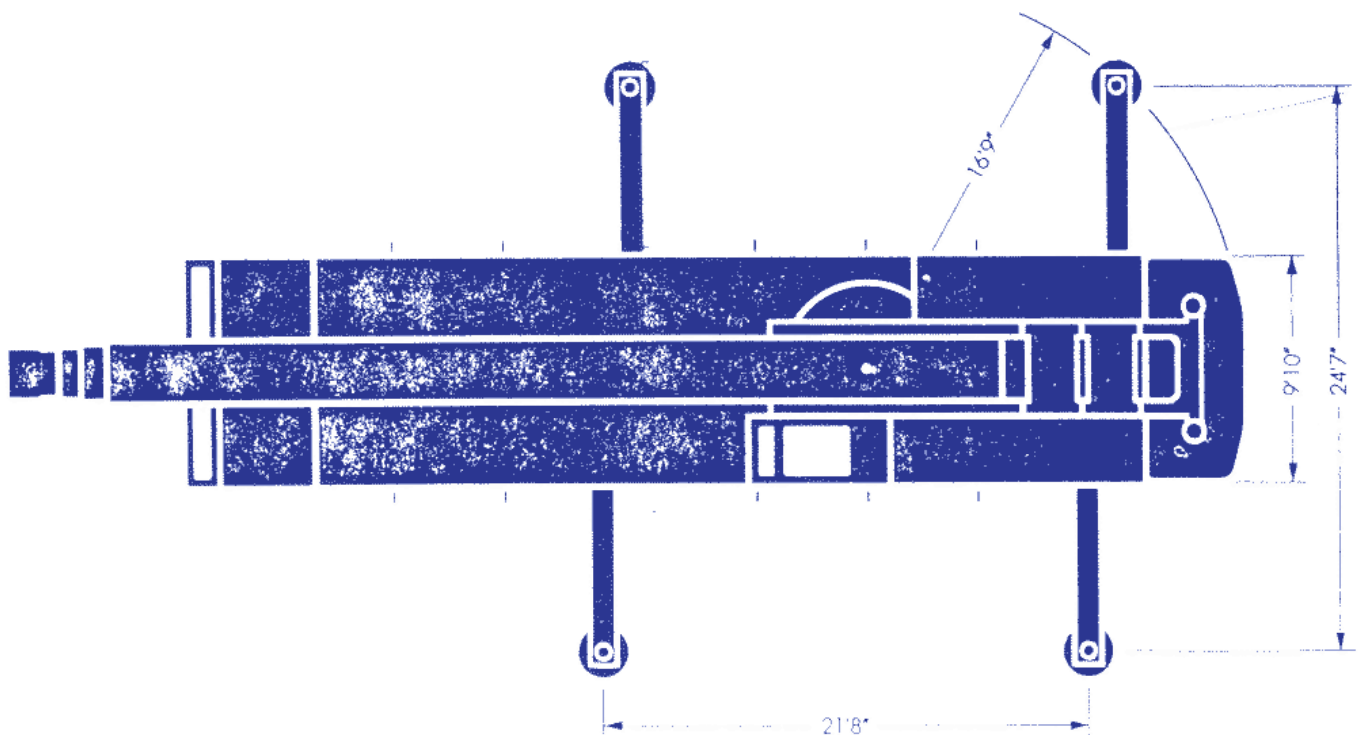
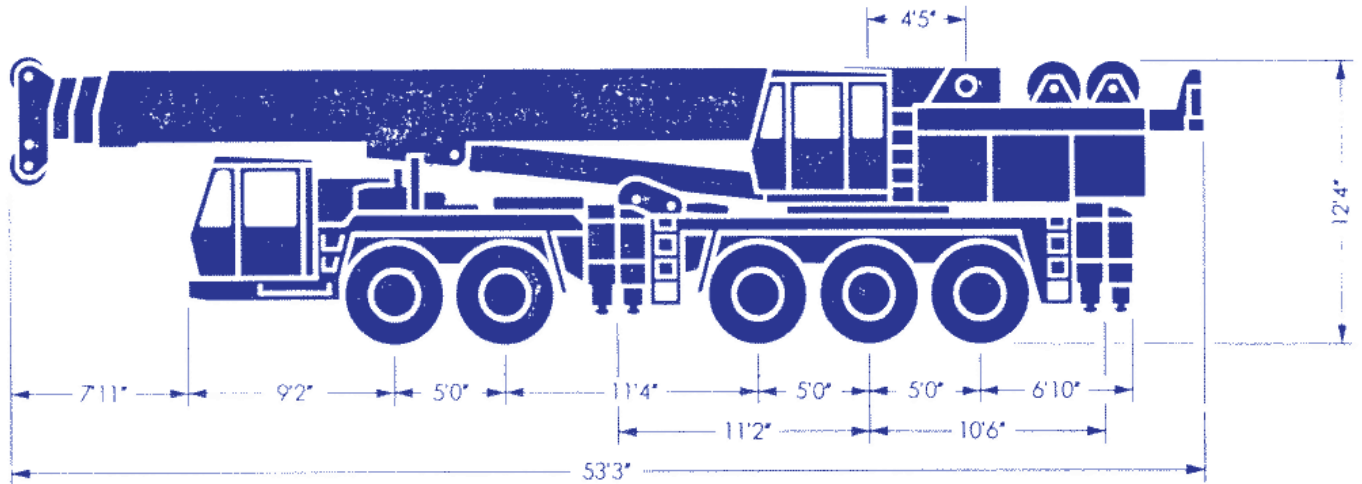


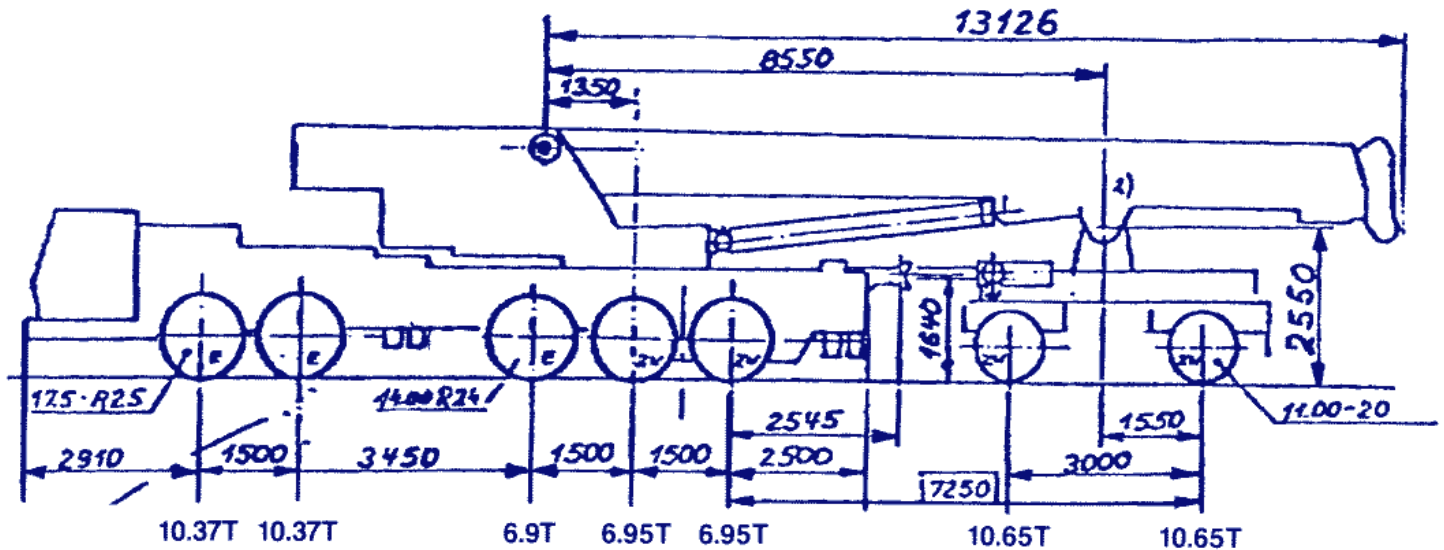
General Specifications

194 FEET BOOM AND JIB

120 TON



AXLE WEIGHT DISTRIBUTION



Auxiliary Hoist

Axial piston motor with planetary gear and fail-safe brake
 Single line pull max.: 16.800 lbs
 Single line speed max.: 417 fpm
 Drum diameter: 20"
 Rope diameter: 3/4"
 Rope length: 850 ft

Main Hoist

Axial piston motor with planetary gear and fail-safe brake
 Single line pull max.: 16.800 lbs
 Single line speed max.: 417 fpm
 Drum diameter: 20"
 Rope diameter: 3/4"
 Rope length: 850 ft

Boom

42'0" - 137'0" 4-section full power boom
 Telescoping cycle:
 1. section 65 sec.
 2. section 72 sec.
 3. section 47 sec.
 High speed:
 1. section 47 sec.
 2. section 46 sec.
 3. section 31 sec.

Jibs

38'0" swing-away lattice extension and inserts
 82'0" power luffing jib

Counterweight

29760 lbs, in 3 sections, hydraulically removable

Performance

Travelling speeds: max. 42 mph
 min. 0.1 mph
 Gradeability: 50%
 Turning radius: 54 ft

Lifting Capacities

Lifting capacities in 1000 lbs

Main boom + swing-away extension

| Radius (ft) | Boom length (ft) | | | | | | | | | | | |
|----------------|---------------------------|-------|------|----------|-------|------|--------|------|--------|------|---------|--|
| | 42'0" | | | 74'0" *) | | | 105'0" | | 137'0" | | + 38'0" | |
| | Hook height max. (ft) | | | | | | | | | | | |
| | 45'0" | | | 77'0" | | | 108'0" | | 140'0" | | 178'0" | |
| | Counterweight in 1000 lbs | | | | | | | | | | | |
| | 29.7 | 7.7 | 29.7 | 29.7 | 7.7 | 29.7 | 29.7 | 7.7 | 29.7 | 7.7 | 29.7 | |
| | A | A | F | A | A | F | A | A | A | A | A | |
| 10 | 240.8 | 180.3 | | 143.3 | 132.3 | | | | | | | |
| 11 | 230.0 | 170.2 | | 143.3 | 132.3 | | | | | | | |
| 12 | 218.6 | 160.7 | | 143.3 | 132.3 | | | | | | | |
| 13 | 206.5 | 152.2 | | 143.3 | 132.3 | | | | | | | |
| 14 | 193.2 | 141.0 | | 143.3 | 127.1 | | | | | | | |
| 15 | 180.8 | 130.1 | 37.0 | 143.3 | 121.4 | 37.0 | 72.8 | 66.1 | | | | |
| 20 | 139.0 | 92.8 | 29.5 | 136.8 | 91.1 | 29.5 | 72.8 | 66.1 | 40.8 | 37.5 | | |
| 25 | 107.6 | 70.5 | 22.5 | 105.9 | 69.2 | 22.5 | 72.1 | 60.7 | 40.8 | 37.5 | | |
| 30 | 85.5 | 55.1 | 17.2 | 84.0 | 54.7 | 17.2 | 63.0 | 50.5 | 40.8 | 37.5 | 16.5 | |
| 35 | 67.2 | 43.4 | 13.2 | 67.6 | 43.2 | 13.2 | 55.0 | 42.6 | 40.8 | 35.6 | 16.5 | |
| 40 | | | | 53.3 | 33.1 | 10.2 | 48.9 | 32.9 | 39.3 | 31.5 | 16.5 | |
| 45 | | | | 43.1 | 25.5 | 7.6 | 42.5 | 25.5 | 35.1 | 27.8 | 16.0 | |
| 50 | | | | 35.4 | 20.0 | 5.0 | 35.1 | 20.1 | 30.8 | 23.2 | 15.2 | |
| 55 | | | | 29.5 | 15.6 | | 29.5 | 15.6 | 27.5 | 18.9 | 14.0 | |
| 60 | | | | 24.5 | 12.3 | | 24.9 | 12.3 | 25.1 | 15.5 | 13.1 | |
| 65 | | | | 21.0 | 9.6 | | 21.1 | 9.6 | 22.8 | 12.6 | 12.4 | |
| 70 | | | | | | | 17.7 | 7.3 | 20.5 | 10.2 | 11.5 | |
| 75 | | | | | | | 15.0 | 5.4 | 18.1 | 8.5 | 10.7 | |
| 80 | | | | | | | 12.6 | 3.8 | 16.1 | 6.8 | 10.0 | |
| 85 | | | | | | | 10.9 | 2.3 | 14.0 | 5.4 | 9.1 | |
| 90 | | | | | | | 9.1 | | 12.3 | 4.1 | 8.4 | |
| 95 | | | | | | | 7.5 | | 10.6 | 3.1 | 7.8 | |
| 100 | | | | | | | | | 9.3 | | 7.1 | |
| 105 | | | | | | | | | 7.9 | | 6.1 | |
| 110 | | | | | | | | | 6.9 | | 5.6 | |
| 115 | | | | | | | | | 5.9 | | 4.9 | |
| 120 | | | | | | | | | 4.9 | | 4.1 | |
| 125 | | | | | | | | | 3.9 | | 3.4 | |
| 130 | | | | | | | | | 3.3 | | 2.7 | |

*) 74 ft boom – section 1 and 2 equally extended

A Crane on outriggers 360°

F Crane free on wheels over rear ± 10°

Load capacities above bold line are based on structural strength, and tipping must not be relied upon as a limitation of lifting capacity.
Rated loads must not be exceeded.

Notes for lifting capacities

Rated loads do not exceed 85% of tipping load with the machine properly levelled on firm ground.

360° duties – on outriggers fully extended, other than noted above (coloured lifting range).

Note counterweight required as listed in relevant lifting capacity columns.

For safe crane operation due allowance must be made to compensate for high

winds, side load, pendulum action and other hazardous conditions. No side pull permitted.

Hook blocks, slings and/or boom attachments are considered part of the load, and their weight must be deducted from the rated lifting capacity to determine the net load.

Lattice extension (straight / off-set)

| Radius | Boom length (ft) | | | |
|---------------------------|-------------------------|--------|--------|--|
| | 137'0" + 57'0" = 194'0" | | | |
| | Hook height max. (ft) | | | |
| | 196'0" | 192'0" | 185'0" | |
| | Off-set angle | | | |
| | 0° | 15° | 30° | |
| Counterweight in 1000 lbs | | | | |
| 29.7 | | | | |
| (ft) | A | | | |
| 35 | 11.5 | | | |
| 40 | 11.5 | | | |
| 45 | 11.4 | | | |
| 50 | 10.8 | | | |
| 55 | 10.3 | 5.4 | | |
| 60 | 9.7 | 5.3 | | |
| 65 | 9.1 | 5.1 | 4.2 | |
| 70 | 8.6 | 4.9 | 3.9 | |
| 75 | 7.8 | 4.8 | 3.8 | |
| 80 | 6.6 | 4.6 | 3.6 | |
| 85 | 5.4 | 4.3 | 3.5 | |
| 90 | 4.3 | 4.1 | 3.4 | |
| 95 | 3.4 | 4.0 | 3.2 | |
| 100 | | 3.8 | 3.1 | |
| 105 | | 3.1 | 3.0 | |
| 110 | | | 2.9 | |

360° Power luffing jib

Counterweight 29.760 lbs

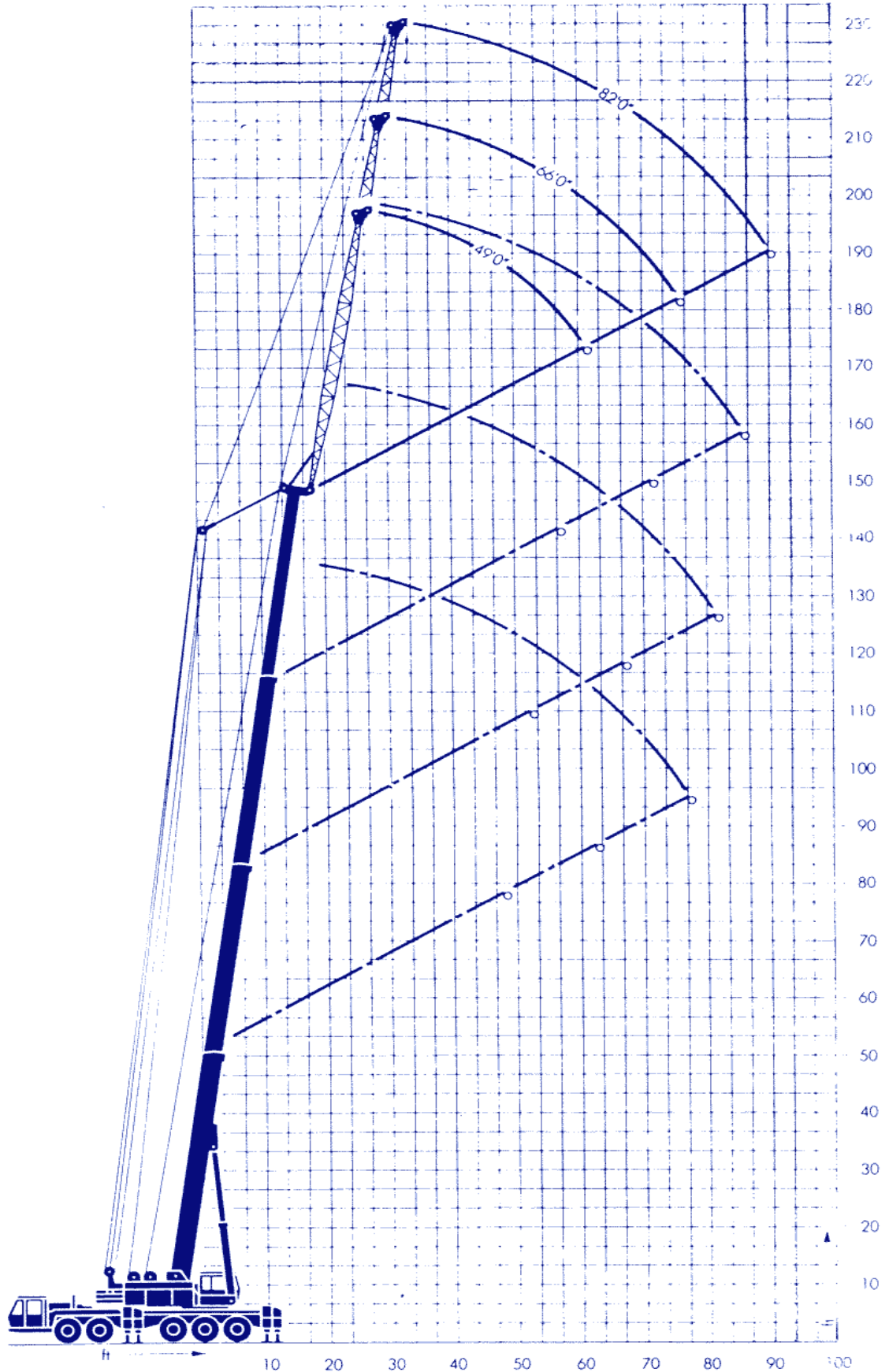
| Main boom ft | Radius ft | Jib length (ft) | | |
|-----------------|--------------|-----------------|-------|-------|
| | | 49'0" | 66'0" | 82'0" |
| 42 | 25 | 33.1 | | |
| | 30 | 32.4 | 24.4 | |
| | 35 | 26.6 | 23.9 | 16.3 |
| | 40 | 22.4 | 23.3 | 15.4 |
| | 45 | 18.6 | 19.8 | 14.5 |
| | 50 | | 17.3 | 13.8 |
| | 55 | | | 13.2 |
| | 60 | | | 12.5 |
| | 65 | | | 11.2 |
| | 70 | | | 9.8 |
| 74 | 25 | 33.1 | | |
| | 30 | 33.1 | | |
| | 35 | 30.4 | 24.2 | |
| | 40 | 25.1 | 23.8 | 16.0 |
| | 45 | 21.0 | 22.1 | 15.1 |
| | 50 | | 18.8 | 14.2 |
| | 55 | | 16.5 | 13.6 |
| | 60 | | 14.5 | 12.9 |
| | 65 | | 12.8 | 12.2 |
| | 70 | | | 10.7 |
| 105 | 35 | 30.3 | | |
| | 40 | 27.0 | 20.5 | 14.0 |
| | 45 | 23.8 | 20.0 | 13.5 |
| | 50 | 20.1 | 19.4 | 13.2 |
| | 55 | | 18.2 | 12.8 |
| | 60 | | 16.1 | 12.3 |
| | 65 | | 13.9 | 11.9 |
| | 70 | | 11.9 | 11.5 |
| | 75 | | | 10.9 |
| | 137 | 35 | 14.1 | |
| 40 | | 13.0 | 12.4 | |
| 45 | | 11.6 | 11.3 | 8.8 |
| 50 | | 10.1 | 10.0 | 8.6 |
| 55 | | 8.7 | 9.0 | 8.4 |
| 60 | | | 8.0 | 8.1 |
| 65 | | | 7.2 | 7.4 |
| 70 | | | 6.2 | 6.5 |
| 75 | | | | 5.9 |
| 80 | | | | 5.3 |
| 85 | | | 4.5 | |

Boom must be fully extended when lifting with the 3rd (power pinned) boom section or with the swing-away extension.

Consult crane manual to determine weight reduction for load handling devices and boom attachments.

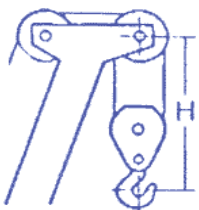
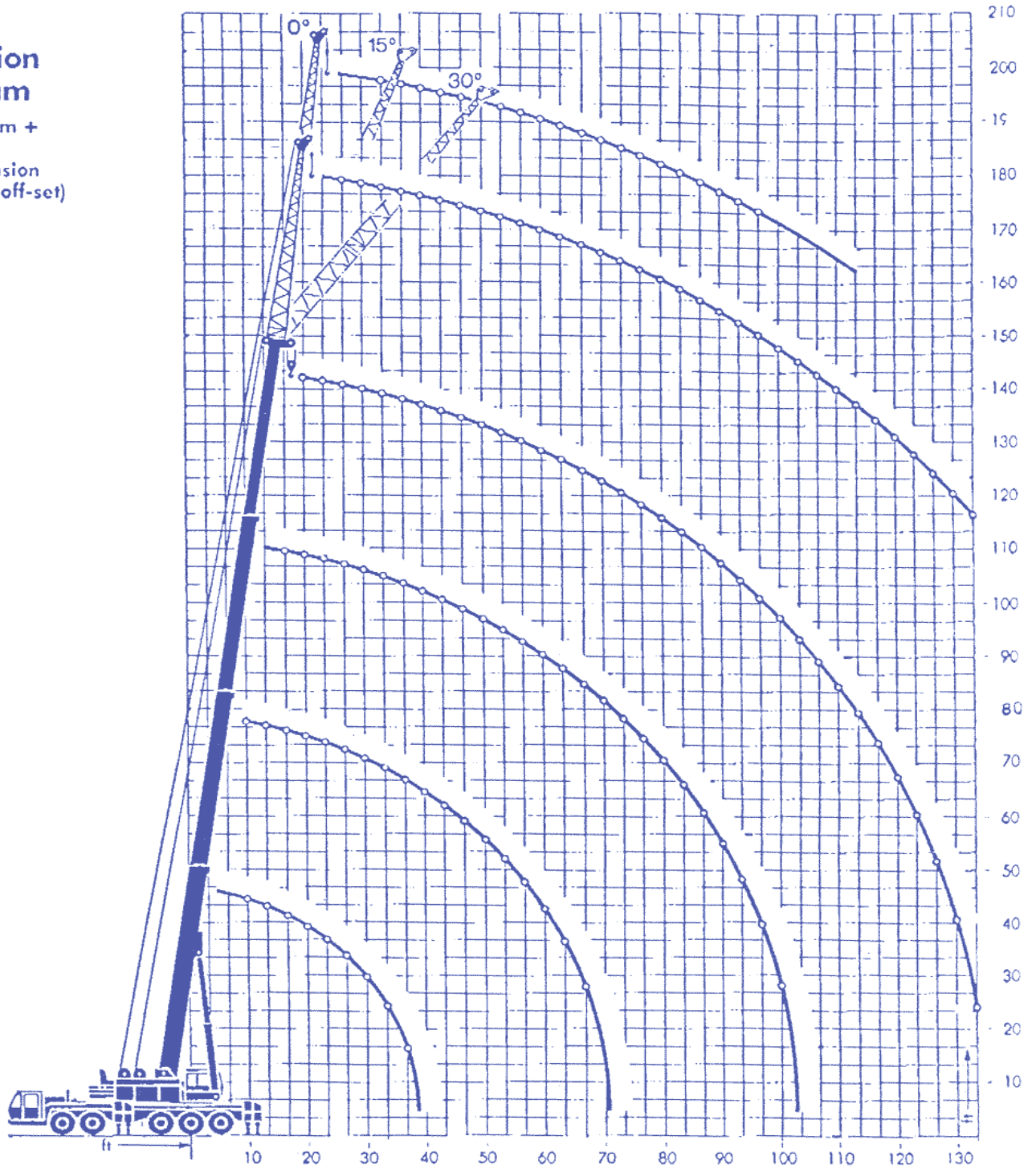
Operate crane strictly in compliance with operator's manual.

**Hook elevation
diagram**
Power luffing jib



**Hook
elevation
diagram**

Main boom +
extension
and extension
(straight / off-set)



Hooks

| | | | | | | |
|------------|-----|------|------|------|------|-------|
| Capacity | ton | 120 | 65 | 35 | 15 | 9 |
| Sheaves | | 9 | 5 | 3 | 1 | 0 |
| Distance H | ft | 7'6" | 7'3" | 6'7" | 5'9" | 8'10" |
| Weight | ton | 1.0 | 0.9 | 0.42 | 0.31 | 0.29 |