

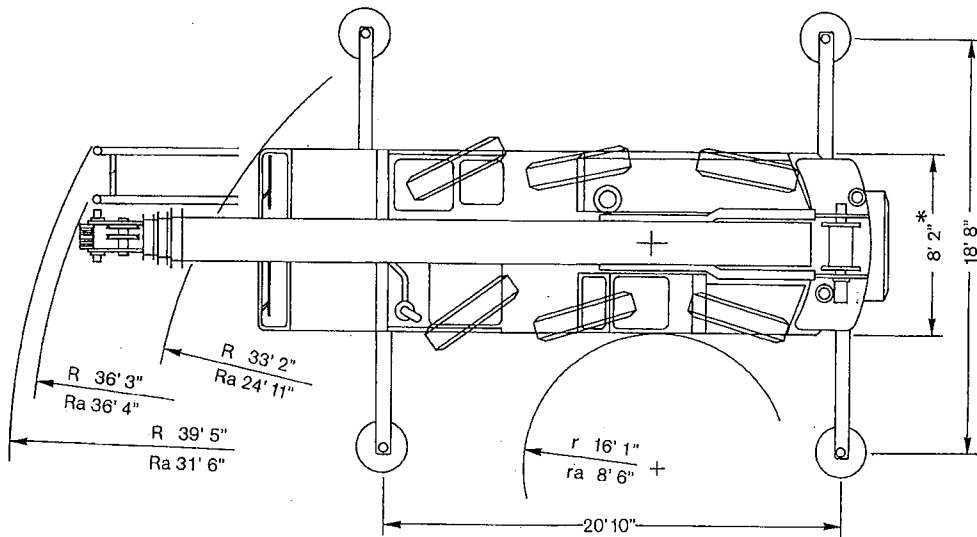
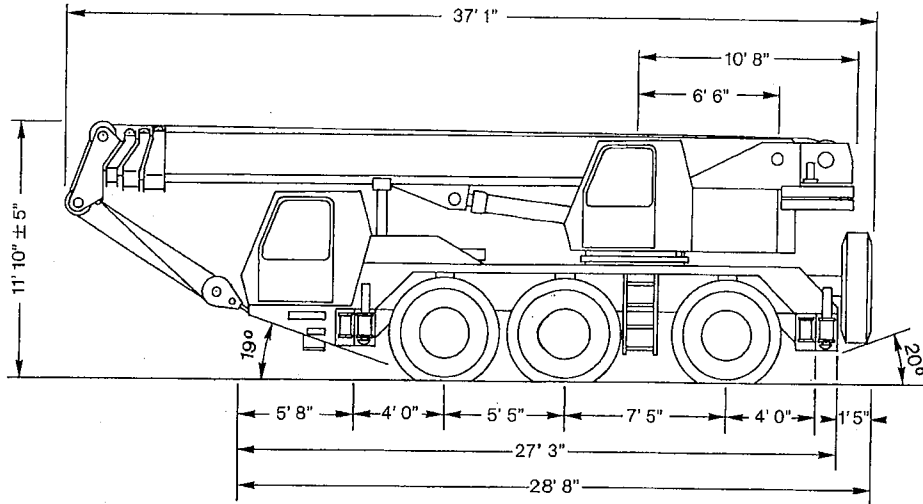
KRUPP

**45 ton Capacity
All-Terrain-Crane**



KMK 3045

Dimensions

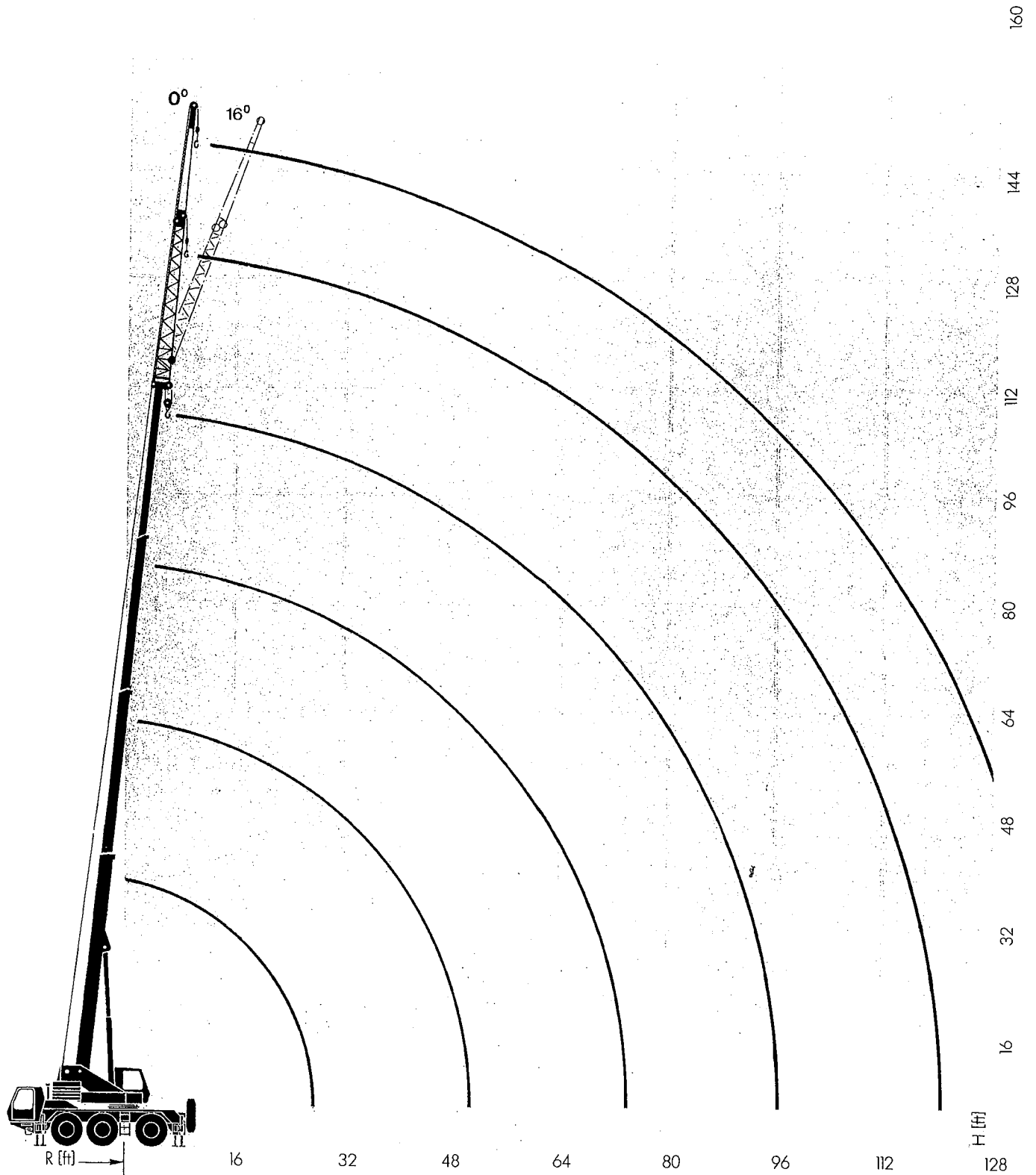


Ra, ra = Radius all wheel steer

* Standard tyres

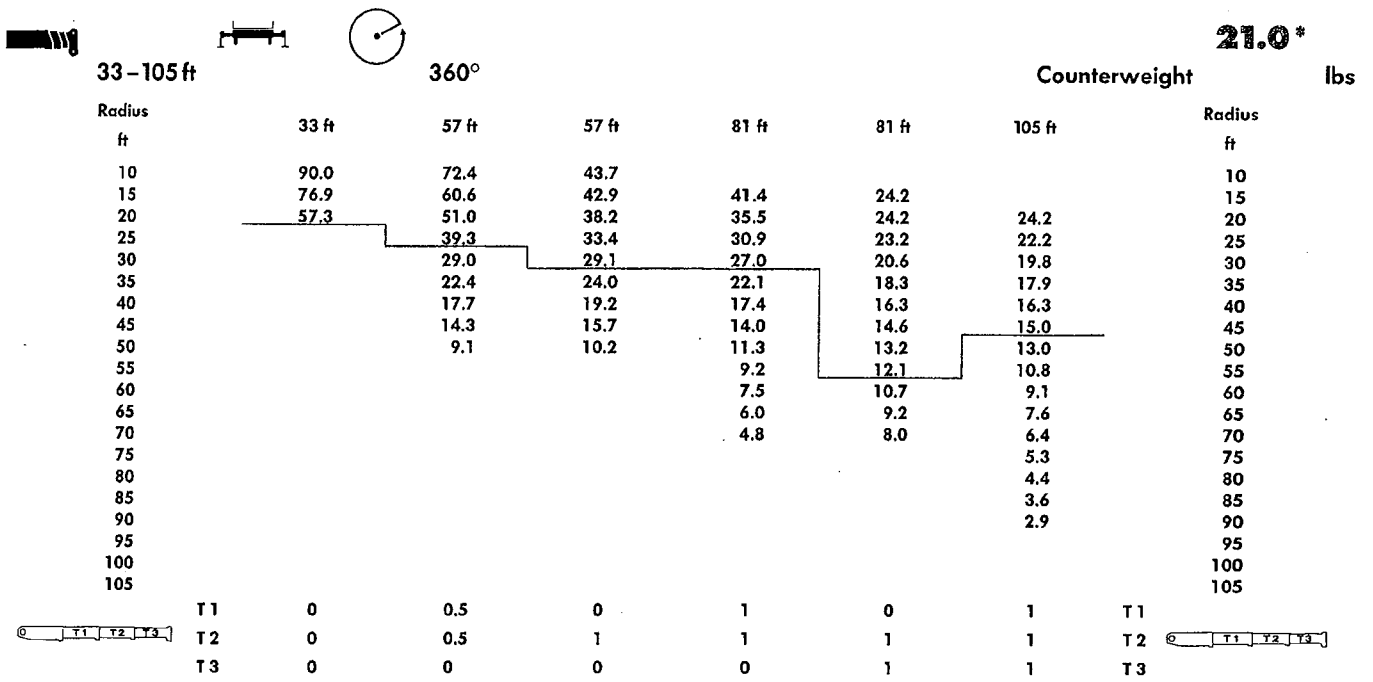
Hook elevation diagram

Main boom and lattice extension

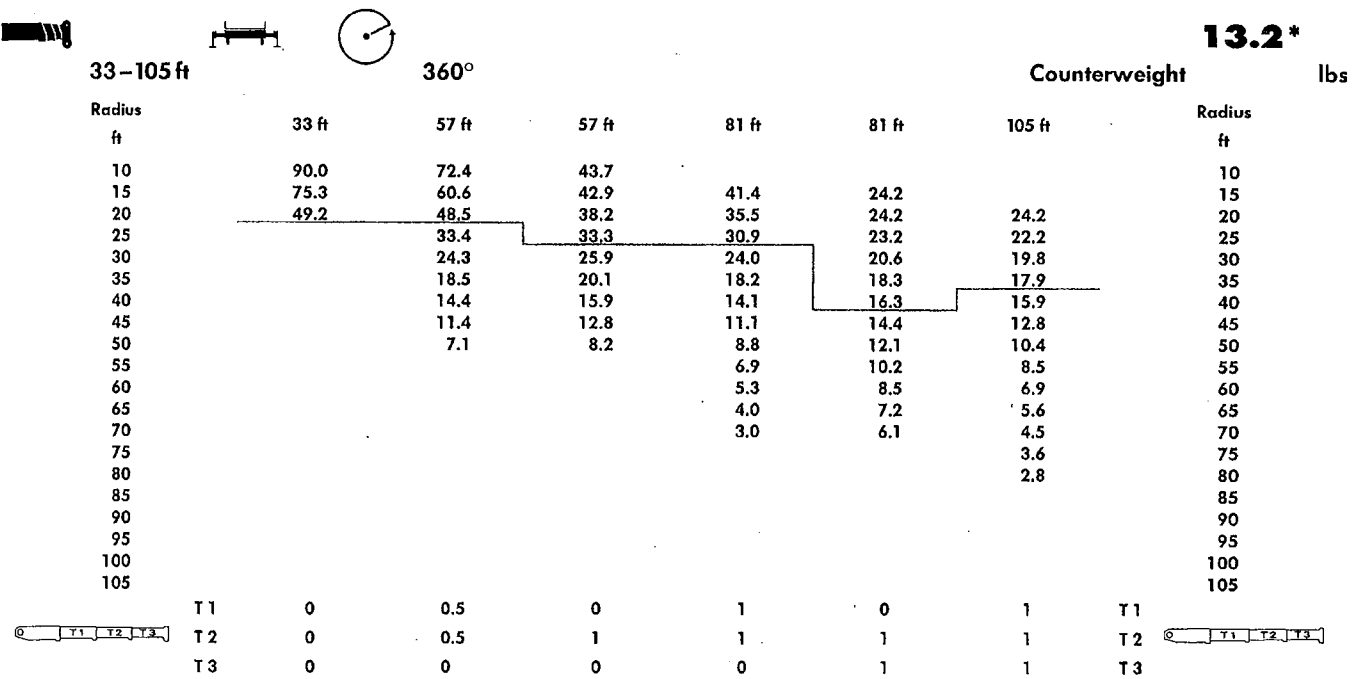


Main boom

Lifting capacities in 1000 lbs



*1000 lbs



*1000 lbs

Main boom + swing-away extension

Lifting capacities in 1000 lbs



26-43 ft



360°

21.0*

Counterweight lbs

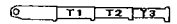
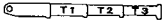
Radius

Main boom length
94 ft

Radius

ft	Lattice extension length 26 ft		Lattice extension length 43 ft		ft
	120 ft	117 ft	137 ft	134 ft	
30	0°	16°	0°	16°	30
35	14.6	12.1	8.2	7.3	35
40	14.3	12.1	7.9	7.1	40
45	13.5	11.8	7.6	6.8	45
50	12.6	11.2	7.3	6.5	50
55	11.9	10.6	7.0	6.2	55
60	10.6	10.0	6.7	6.0	60
65	8.8	8.8	6.4	5.7	65
70	7.4	7.4	6.2	5.5	70
75	6.1	6.1	5.9	5.3	75
80	5.0	5.0	5.7	5.1	80
85	4.1	4.1	5.3	4.5	85
90	3.3	3.3	4.5	4.5	90
95	2.6	2.6	3.8	3.8	95
100			3.1	3.1	100

	T1	T2	T3	T1	T2	T3
T1	1			1		
T2	1	1		1	1	
T3	0.5	0.5	0.5	0.5	0.5	0.5



*1000 lbs



26-43 ft



360°

13.2*

Counterweight lbs

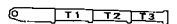
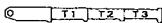
Radius

Main boom length
94 ft

Radius

ft	Lattice extension length 26 ft		Lattice extension length 43 ft		ft
	120 ft	117 ft	137 ft	134 ft	
30	0°	16°	0°	16°	30
35	14.6	12.1	8.2	7.3	35
40	14.3	12.1	7.9	7.1	40
45	13.5	11.8	7.6	6.8	45
50	12.4	11.2	7.3	6.5	50
55	10.3	10.3	7.0	6.2	55
60	8.4	8.4	6.7	6.0	60
65	6.8	6.8	6.4	5.7	65
70	5.4	5.4	6.2	5.4	70
75	4.3	4.3	5.5	4.5	75
80	3.3	3.3	4.5	4.5	80
85	2.5	2.5	3.7	3.7	85
90			3.0	3.0	90
95					95
100					100

	T1	T2	T3	T1	T2	T3
T1	1			1		
T2	1	1		1	1	
T3	0.5	0.5	0.5	0.5	0.5	0.5



*1000 lbs

Main boom + swing-away extension

Lifting capacities in 1000 lbs



26-43 ft



360°

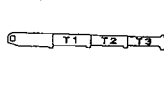
Counterweight **21.0*** lbs

Radius

Main boom length
105 ft

Radius

ft	Lattice extension length 26 ft		Lattice extension length 43 ft		ft
	131 ft	130 ft	148 ft	146 ft	
	0°	16°	0°	16°	
40	9.7		6.1		40
45	9.7	8.5	6.1		45
50	9.6	8.4	6.1	5.6	50
55	9.0	8.1	6.1	5.4	55
60	8.5	7.7	5.9	5.2	60
65	7.6	7.3	5.7	4.9	65
70	6.3	6.3	5.5	4.7	70
75	5.3	5.3	5.4	4.5	75
80	4.3	4.3	5.2	4.4	80
85	3.5	3.5	4.6	4.4	85
90	2.8	2.8	3.9	3.9	90
95			3.2	3.2	95
100					100
105					105
110					110



T1
T2
T3

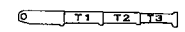
1
1
1

1
1
1

1
1
1

1
1
1

T1
T2
T3



*1000 lbs



26-43 ft



360°

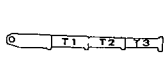
Counterweight **13.2*** lbs

Radius

Main boom length
105 ft

Radius

ft	Lattice extension length 26 ft		Lattice extension length 43 ft		ft
	131 ft	130 ft	148 ft	146 ft	
	0°	16°	0°	16°	
40	9.7		6.1		40
45	9.7	8.5	6.1		45
50	9.6	8.4	6.1	5.6	50
55	8.6	8.1	6.1	5.4	55
60	7.0	7.0	5.9	5.2	60
65	5.6	5.6	5.7	4.9	65
70	4.5	4.5	5.4	4.7	70
75	3.5	3.5	4.6	4.5	75
80			3.8	3.8	80
85			3.1	3.1	85
90					90
95					95
100					100
105					105
110					110



T1
T2
T3

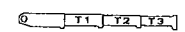
1
1
1

1
1
1

1
1
1

1
1
1

T1
T2
T3



*1000 lbs

Weights / Working speeds

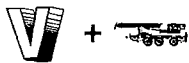


Axle	1	2	3	Total weight
1000 lbs	26.5	26.5	26.5	79,5*

* incl. 13.200 lbs counterweight



Lifting capacity (tons)	Sheaves	Parts of line	Weight lbs
30	3	1 - 7	770
12	1	1 - 3	400




Gear	1	2	3	4	5	6	R1	R2	Gradeability max.
On-road (mp/h)	4.7	8.3	10.9	19.1	23.9	42.0	4.7	10.9	50%
Tyres	14.00 R 25								




Drives	ininitely variable	Rope diameter / Rope length	Max. single line pull
Main hoist	0 - 460 ft/min. single line	16 mm (5/8") / 560 ft	9700 lbs
Auxiliary hoist	0 - 460 ft/min. single line	16 mm (5/8") / 560 ft	9700 lbs
Swing gear	0 - 2.5 min ⁻¹		
Boom elevation	approx. 45 seconds to reach from -3° to +84° boom angle		
Telescoping	approx. 100 seconds for boom length from 33 - 105 ft		


 Telescopic boom

 On outriggers

 Working range

 Axle load

 Hook blocks and hook

 Crane motion

 Speed

 Swing-away lattice

 free on wheels

Carrier

Chassis:	Special KRUPP 3-axle carrier, all-welded torsion-resistant box-type construction in high strength steel.
Outriggers:	4 hydraulically telescoping beams with vertical cylinders and outrigger pads. Independent horizontal and vertical movement control on each side of the chassis. Levelling device.
Engine:	Mercedes-Benz OM 442 diesel, 8 cylinders, water-cooled, 221 kW (300 HP) at 2100 min ⁻¹ (DIN 6271 IFN). Max. torque: 1100 Nm (112,1 kp) at 1100-1500 min ⁻¹ . Tank capacity: approx. 80 gal.
Transmission:	ZF 6-gear powershift 6 WG 200 with integrated transfer case, and front axle drive disconnect.
Axle lines:	3 axle lines. Axle lines 1 and 3 are drive steer axle lines, 2nd axle steering only, 6x4 steering mode for highway travel, 6x6 steering mode off-road.
Suspension:	All axle lines hydropneumatic suspension. Level control. Suspension range $\pm 5''$. Possible combinations for transverse slope.
Tyres:	6 tyres, 14.00 R 25.
Steering:	ZF, dual-circuit, hydraulic power assisted steering.
Brakes:	Service brake: pneumatic dual-circuit, acting on all wheels. Permanent brake: exhaust brake. Hand brake: pneumatically operated spring-loaded brake acting on 2nd and 3rd axle line.
Driver's cab:	Aluminium, 2-man-design, safety glass, driver's seat with hydraulic suspension, engine hot-water heating. Complete instrumentation and driving controls.
Electrical system:	Three-phase generator 28V/55 A, 2 batteries 12V/143 Ah, lighting system and signals.

Superstructure

Frame:	KRUPP-made, torsion-resistant welded construction in high strength steel.
Engine:	See carrier.
Hydraulic system:	3 separate circuits. Tank capacity: 150 gal., 2 variable displacement pumps, flange mounted gear pumps.
Control system:	Infinite variation of all crane movements by control levers with automatic reset to zero.
Main hoist:	Axial-piston motor with planetary gear and automatic multiple-disc brake.
Boom elevation:	1 cylinder with safety holding valve, boom angle from -3° to $+84^\circ$.
Swing gear:	Vane motor, planetary gear, and holding brake as well as multiple-disc brake.
Cab:	Aluminium, full vision, safety glass, adjustable operator's seat with hydraulic suspension, engine-independent heating, instrumentation and operating controls for carrier and superstructure.
Safety installations:	Hoist and lowering limit switch, pipe check valves, pressure relief valves.
Telescopic boom:	Welded construction in high strength steel, 1 base section, 3 telescopic sections. Total boom length: 105 ft, hydraulic full power.

Additional equipment

Tyres:	6 tyres, 16.00 R 25 (vehicle width 9'0").
Swing-away lattice:	2-stage, stowing alongside boom, 26-43 ft.
Aux. hoist:	2nd hoist gear.
Driver's cab:	Engine-independent heater with engine preheater.
Safe load indicator:	Electronic load moment safety device (type EKS 83) with automatic cut-out and digital display for actual and admissible load, radius and various working conditions.

Further options upon request.